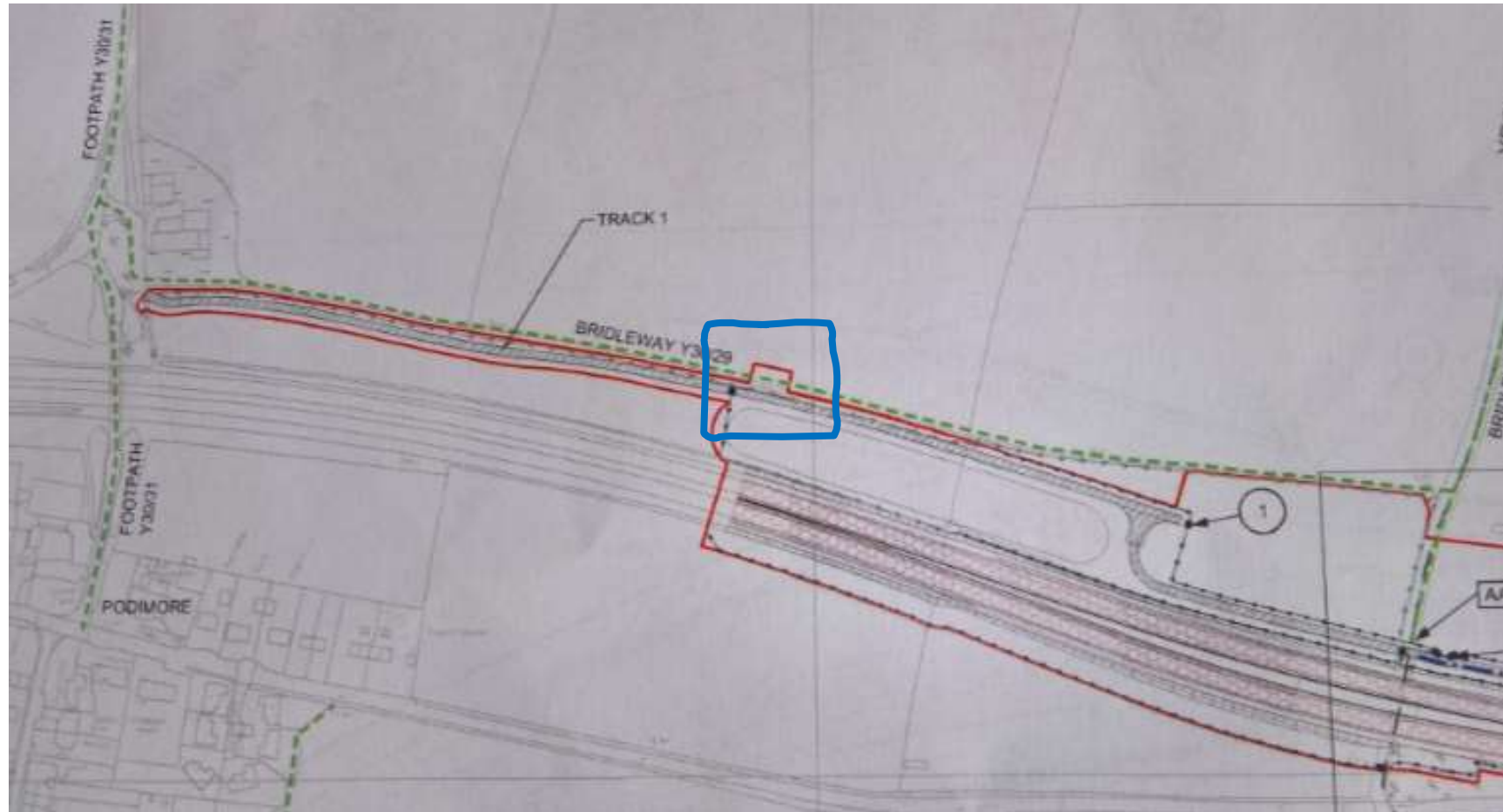


Appendix 2 POTENTIAL LEGACY ISSUES IF ONLY PARTIAL REVOCATION OF 1996 SRO



- Bridleway Y 30/29 was possibly created as a result of the 1996 Side Road Order.
- The applicant is proposing only partial revocation of this Order within the limits of the development.
- The above is just one example of a legacy issue where two cul-de-sac brideways could be created as a result.
- Partial revocation is unacceptable as it creates legacy issues and difficulties in how the Definitive Map & Statement is updated. Wholesale revocation (in parallel with the DCO process) would make more sense.